

Range Guide

Construction Equipment



People.
Passion.
Performance.



Chicago
Pneumatic

Since 1901, Chicago Pneumatic has produced equipment designed not only to get the job done, but also to get it done efficiently, effectively and safely. Just as important, Chicago Pneumatic equipment is built to get right back to work on the next job.

Today the Chicago Pneumatic brand represents an extensive range of tools, hydraulic attachments, generators, compressors, accessories and more — with innovation and durability built into every piece of Chicago Pneumatic equipment.

BACKED BY TRUSTED PEOPLE

Chicago Pneumatic equipment is built for real-world applications by people who understand what tools need to do. So whether you're a rental dealer who needs to provide reliable equipment every day or you're a worker who needs productive, high-performing tools, you can trust Chicago Pneumatic equipment. Plus, thanks to Chicago Pneumatic's global network of dealers and support, the parts and service you need for maximum uptime are always close by.



TABLE OF CONTENTS

RIG-MOUNTED EQUIPMENT

Light Breakers	4
Medium Breakers	4
Heavy Breakers	5
Compactors	5

COMPACTION EQUIPMENT

Forward Soil Plates	6
Forward Asphalt Plates	6
Forward & Reversible Plates	7
Walk Behind Drum Roller	7
Trench Rollers	7
Tampers	8

PETROL-DRIVEN EQUIPMENT

Red Hawk Motor Drills And Breakers	9
--	---

HYDRAULIC EQUIPMENT

Power Packs	10
Pick Hammers	11
Breakers	11
Cut-Off Saws	12
Core Drills	12
Rock Drills	12
Post Puller	12
Post Drivers	13
Post Hole Borer	13
Submersible Water Pumps	13

HANDHELD PNEUMATICS

Breakers	14
Spike Drivers	14
Pick Hammers	15
Clay Diggers	16
Chipping Hammers	17
Rivet Busters	17
Rotary Hammers	18
Core Drill	18
Scabblers	19
Sinkers/Surface Rock Drills	19
Tampers	20
Sump Pumps	20
Sludge Pump	20

CONCRETE EQUIPMENT

Electronic Pokers	21
Mechanical Pokers	21
Drive Units	21
High Frequency Poker	22
Electric Pokers	22
Generators	22
Frequency Converters	23
Walk-behind Screeds	23
Pneumatic Pokers	23
Truss Screeds	24
Combiforms	24
Power Trowels	25
Spreader Wagon	26
Floor Saws	26

**PEOPLE.
PASSION.
PERFORMANCE.**

RIG-MOUNTED EQUIPMENT

Just as a nail needs to be tough enough to take a pounding from the hammer, rig-mounted hydraulic equipment needs to hold up to both the power of the carrier and the rough conditions of the application. Fortunately, our rig-mounted breakers and compactors are built not only to take a pounding, but also to give one.

Along with the rugged performance, our rig-mounted equipment eliminates worries. You'll never worry about compatibility, because they're designed to work with the carrier of your choice. You'll never worry about reliability, because, after all, they're built by us.

HYDRAULIC BREAKERS

Standard features

- Hybrid technology for higher impact energy
- Internal control valve for higher efficiency
- Power booster for higher performance and lower vibration
- Breaker box guiding system for lower noise and vibration
- Central lubrication port for easier maintenance
- Field replaceable floating bushing (RX 2-12)
- Monoblock design with less components for higher reliability (RX 2-22)
- Dual retainer bars for higher reliability (RX 12-54)
- Power Control Plus for optimized performance and protection (RX 26-54)

Optional features

- CP- Lube for automatic lubrication (RX 12-54)
- Dust wiper for better dust protection (RX 14-54)



LIGHT BREAKERS	RX 2	RX 3	RX 4	RX 6	RX 8	RX 12
Carrier weight Class t	1 - 3	2 - 4.5	3 - 6	4 - 9	5 - 12	9 - 15
Service weight kg	95	150	215	275	370	625
Tool diameter mm	42	52	62	70	80	90
Oil flow rate l/min	15 - 30	30 - 50	35 - 60	45 - 75	60 - 90	80 - 110
Operating pressure bar	110 - 130	110 - 140	110 - 140	110 - 140	120 - 150	130 - 150
Impact rate bpm	560 - 1,600	670 - 1,500	520 - 1,300	530 - 1,200	530 - 1,000	600 - 950
Sound Power Level guaranteed dB(A)	109	111	113	114	115	116
Part Number without CP-Lube	8460 0500 38	8460 0500 39	8460 0500 66	8460 0500 67	8460 0500 67	3363 1168 36
Part Number with CP-Lube	-	-	-	-	-	3363 1178 89



MEDIUM BREAKERS	RX 14	RX 18	RX 22
Carrier weight Class t	12 - 19	15 - 24	17 - 28
Service weight kg	800	1,200	1,500
Tool diameter mm	100	120	135
Oil flow rate l/min	100 - 120	120 - 140	140 - 160
Operating pressure bar	150 - 170	150 - 170	150 - 170
Impact rate bpm (EasyPower)	-	-	-
Impact rate bpm (PowerStop)	650 - 850	550 - 720	520 - 680
Sound Power Level guaranteed dB(A)	117	120	122
Part Number without CP-Lube	3363 1145 61	3363 1150 22	3363 1168 11
Part Number with CP-Lube	3363 1168 10	3363 1168 11	3363 1168 12



HEAVY BREAKERS	RX 26	RX 30	RX 38	RX 46	RX 54
Carrier weight Class t	20 – 33	25 – 40	29 – 46	35 – 55	45 – 70
Service weight kg	1,800	2,200	2,600	3,000	4,200
Tool diameter mm	140	150	155	165	180
Oil flow rate l/min	130 – 180	150 – 200	180 – 220	220 – 270	250 – 320
Operating pressure bar	150 – 170	150 – 170	160 – 180	160 – 180	160 – 180
Impact rate bpm (EasyPower)	400 – 800	450 – 800	530 – 800	540 – 800	550 – 800
Impact rate bpm (PowerStop)	380 – 650	380 – 620	380 – 590	380 – 580	380 – 570
Sound Power Level guaranteed dB(A)	122	122	124	124	126
Part Number without CP-Lube	3363 1123 91	3363 1124 31	3363 1126 03	3363 1138 76	3363 1138 38
Part Number with CP-Lube	3363 1168 13	3363 1168 14	3363 1168 15	3363 1168 16	3363 1168 17

COMPACTORS



Applications

- Used for slope, trench and waste compaction, road repair, side development and piling

Features

- Handle nearly every job with high compaction frequency and maximum vibrating force
- Models to fit most carriers and projects
- AutoLube system eliminates regular manual greasing
- No limitation of back pressure in the return line

COMPACTORS	RC 150	RC 350	RC 450	RC 850	RC 1050
Carrier weight class ¹⁾	1 – 3	3 – 8	4 – 9	9 – 20	20 – 40
Service weight ²⁾ kg	160	320	430	880	1,130
Height mm	486	623	622	764	786
Plate dimensions (W x L) mm	295 x 721	475 x 846	610 x 929	710 x 1,272	864 x 1,364
Plate coverage m ²	0.17	0.31	0.40	0.68	0.90
Vibrating force t	1.4	2.3	3.6	7.3	10.5
Vibrating frequency n/min	2,100	2,100	2,200	2,200	2,200
Operating pressure bar	150	150	150	150	150
Oil flow l/min	30	57	76	114	151
Motor oil quantity (in rotor housing) l	0.6	0.8	0.9	3.7	3.7
Part Number	1826 1018 07	1826 1018 08	1826 1018 09	1826 1018 10	1826 1018 11

¹⁾Weights apply to standard carriers only. Any variations must be agreed with Chicago Pneumatic and/or the carrier manufacturer prior to attachment.

²⁾Compactor with medium-sized adapter.



COMPACTION EQUIPMENT

Bridge repair. Road maintenance. Asphalt. Our compaction solutions let you do what you need to do. The complete line ensures the right equipment for the job, and the durable construction ensures that the equipment will still be just right for the next job.

That's power and performance. That's Chicago Pneumatic.

FORWARD SOIL PLATES



Applications

- Used for compacting dirt, gravel, soil and more. Typical applications are parking lots, bike paths, landscaping, repairs and a variety of similar jobs

Features

- Ideal blend of power and speed
- Designed to meet high demands of daily duty
- Durable frame and cover protect vital engine parts for long-term reliability
- Range of sizes to meet a variety needs
- Lifelong lubrication and easy maintenance
- Easy to turn and maneuver
- V-belt ventilation system
- Block paving kits available

FORWARD SOIL PLATES	MV 52	MV 82	MV 84 T	MV 100	MV 135	MV 140	KMR 11
Operating Weight kg	51.4	75.5	85.3	94.5	131.7	138.5	96.4
Centrifugal Force kN	8.4	18	19.4	16.7	19.8	19.8	16
Max Speed m/min	24	25	33	25	22	22	22
Plate Width mm	320	460	420	500	500	500	Round 450
Engine	Honda® Petrol	Honda® Petrol	Honda® Petrol	Honda® Petrol	Honda® Petrol	Hatz Diesel	Honda® Petrol
Sound Power Level Guaranteed dB(A)	100	104	103	104	104	104	104
Sound Pressure at Operators Ear dB(A)	89	92	91	93	95	93	92
H/A Vibrations m/s ²	6.9	16.5	6.7	6	5.4	6.8	6.1
Part Number	4812 0991 25	3382 0002 74	4812 0991 27	3382 0000 85	4812 0991 30	4812 0991 31	3382 0000 83
Block paving kit part no.	3382 0129 60	4700 3930 43	4812 0701 71	4812 0701 72	4812 0701 72	4812 0701 72	N/A

T = Transport wheels

FORWARD ASPHALT PLATES



Applications

- Used to compact asphalt for parking lots, bike paths, pothole repair and other demanding applications where the compaction of asphalt is required

Features

- Ideal blend of power and speed
- Designed to meet high demands of daily duty
- Durable frame and cover protect vital engine parts for long-term reliability
- Range of sizes to meet a variety needs
- Lifelong lubrication and easy maintenance
- Easy to maneuver
- Large robust and easily removable water tank
- Sprinkler system with easy to access regulation valve
- V-belt ventilation system on top of the water tank

FORWARD ASPHALT PLATES	MV 58 A	MV 84 AT	MV 90 AT	MV 90 AT	MV 100 AT	MV 115 AT
Operating Weight kg	63	86	90.7	94.1	107.3	116.3
Centrifugal Force kN	10	19.4	14.6	14.6	16.7	16.7
Max Speed m/min	25	33	27	24	25	25
Plate Width mm	350	420	420	500	500	500
Engine	Honda® Petrol	Honda Petrol	Honda® Petrol	Honda® Petrol	Honda® Petrol	Hatz Diesel
Sound Power Level Guaranteed dB(A)	100	103	102	102	104	104
Sound Pressure at Operators Ear dB(A)	88	91	91	91	93	93
H/A Vibrations m/s ²	7.9	6.7	6	6	6	9.3
Part Number	3382 0005 53	3382 0003 71	3382 0000 84	4812 0991 32	4812 0991 28	4812 0991 29
Block paving kit part no.	3382 0129 55	4812 0701 71	4812 0701 71	4812 0701 72	4812 0701 72	4812 0701 72

A = Water tank T = Transport wheels

FORWARD & REVERSIBLE PLATES



Applications

- Used for compacting dirt, gravel and soil in a variety of applications

Features

- Excellent compaction power and speed in either direction
- Smooth regulation of speed and compaction depth
- The handles are vibration reduced for operator comfort and safety
- Range of petrol- and diesel-powered models to meet a variety of needs
- Robust heavy-duty frame in open service friendly design for long-term reliability
- Easy to maneuver

FORWARD & REVERSIBLE PLATES	MV 164	MV 174	MV 224	MV 244 Electric Start	MV 305	MV 320 Electric Start	MV 400	MV 430	MV 504 Electric Start	MV 504 Electric Start
Operating Weight kg	157	169	211	244	265	302	398	436	469,5	498,5
Centrifugal Force kN	28	28	36	36	40	40	52	52	65	65
Max Speed m/min	22	22	23	22	25	25	25	25	30	30
Plate Width mm	450	450	500	500	600	600	650	650	550	700
Engine	Honda® Petrol	Hatz Diesel	Honda® Petrol	Hatz Diesel	Honda® Petrol	Hatz Diesel	Honda® Petrol	Lombardini® Diesel	Hatz Diesel	Hatz Diesel
Sound Power Level Guaranteed dB(A)	108	108	106	108	108	108	108	108	109	109
Sound Pressure at Operators Ear dB(A)	91	92	90	90	92	92	93.2	94.5	96	96
H/A Vibrations m/s ²	2.3	3.5	3.5	3.4	2.4	1.7	2.5	2.1	2.5	2.5
Part Number	4812 0991 42	4812 0991 43	3382 0006 28	3382 0006 29	4812 0991 40	4812 0991 41	3382 0000 88	3382 0001 17	3382 0006 05	3382 0006 06
Block paving kit part no.	4700 3944 63	4700 3944 63	4700 3820 00	4700 3820 00	4700 3944 67	4700 3944 67	3382 0111 53	3382 0111 53	-	3382 0150 76

Transport wheel device: 164-320 = 4700 3949 33 400-504 = N/A

WALK BEHIND DRUM ROLLER



Applications

- Used for compacting thin layers on granular soils and asphalt, plus applications where precision control is needed to handle small tolerances, such as close to walls and borders

Features

- Fully hydraulic
- Large water tank minimizes refills and acts as protection for the hydraulic components
- Built with quality components to handle tough conditions
- World-class oil-cooling system helps maintain uptime
- Ergonomic handle, stepless forward/backward control and compact design makes it easy to maneuver

DUPLEX ROLLER

MR 7005

Engine	Hatz 1D42S
Fuel	Diesel
Start	Electric
Max Power kW (hp)	7.2 (9.7)
Rated Speed rpm	3,200
Max Forward Speed m/min	60
Net Weight kg	765
Drum width mm	650
Centrifugal Force kN	21.08
H/A Vibrations m/s ²	4.1
Sound Power Level Guaranteed dB(A)	107
Sound Pressure at Operators Ear dB(A)	88
Part Number	3382 0005 56

TRENCH ROLLERS



Applications

- Used for cohesive or granular soil work in trenches, construction backfills, foundations and on roads

Features

- Powerful engine, superior traction and reliable operation
- Bluetooth radio remote controlled
- Fully hydraulic with integrated hydraulic oil cooler
- Strong welded scrapers are standard
- Lockable hinged doors for easy maintenance access

TRENCH ROLLERS

	TR 630	TR 850
Weight kg	1,573	1,675
Centrifugal Force kN	65	65
Max Speed m/min	21	21
Number of Drums	4	4
Drum Width mm	630	850
Engine	Hatz Diesel	Hatz Diesel
Sound Power Level Guaranteed dB(A)	106	106
Sound Pressure at Operators Ear dB(A)	-	-
Gradeability	36%	36%
Frequency Hz	32	32
Part Number	3382 0000 91	3382 0000 90



Applications

- Used in construction, utility and municipal applications for compaction of cohesive and mixed soils, silt, clay, sand and gravel

Features

- Powerful force and hitting power for excellent compaction results
- Built to withstand the toughest working conditions
- Efficient shock absorbers
- Outstanding balance for operator control and comfort
- Easy maintenance and low fuel consumption
- Easy to handle

TAMPERS	MS 595	MS 595	MS 695	MS 840
Operating Weight kg	61	62	70	85
Impact Force kN	–	–	–	21.4
Max Speed m/min	15-18	15-18	15-18	11.5
Frequency Hz	11.9	11.9	11.9	11.9
Plate Width mm	153	230	280	280
Engine	Honda® GXR 120 Gasoline	Honda® GXR 120 Gasoline	Honda® GXR 120 Gasoline	Hatz 1B20 Diesel
Power at Rated Speed kW at rpm (hp at rpm)	2.6 (3.48)	2.6 (3.48)	2.6 (3.48)	3.0 (4.0)
Sound Power Level Guaranteed dB(A)	106	106	106	107
Sound Pressure at Operator's Ear dB(A)	92	92	92	95
H/A Vibrations m/s ²	6.4	6.4	6.4	11.9
Part Number	3382 0006 13*	3382 0006 15*	3382 0006 17*	4812 0991 38

* with filter indicator and hour meter



PETROL-DRIVEN EQUIPMENT

The freedom to do your work your way is at the heart of our petrol driven tools. You simply want to get to the jobsite and get to work, and we have you covered with a tool that fits in the trunk of a car and powers up with minimal setup time. No external energy needed. No hoses. No cables. Just start it and get the job done.

Not only will you handle the toughest jobs, but you'll also meet the toughest regulations. Our petrol driven tools meet US EPA 1 emission regulations as well as the European Noise Emission Directive.

RED HAWK MOTOR DRILLS AND BREAKERS



Applications

Red Hawk Drill combines breaking and drilling in one package. This universal tool is ideal for light service jobs and working in remote locations.

Features

- Easy transport — lightweight and fits easily in a car trunk
- Minimal setup time lets you get right to work and get the job done quickly
- Rugged power and durability
- Vibration-dampening handles
- Choke control for easy starting
- Meets evolving emission and noise regulations
- Works with a wide range of chisels, drivers, cutters and more

RED HAWK MOTOR DRILLS AND BREAKERS	Red Hawk Road		Red Hawk Rail		Red Hawk Drill
Weight kg	22	23	22	22.5	25
Length mm	795	845	795	845	732
Impact Energy J	60	60	40	40	22-25
Blow Frequency bpm	1,440	1,440	1,620	1,620	2,700
Power kW	2	2	1.5	1.5	2
Motor cc	90, 2-stroke	90, 2-stroke	90, 2-stroke	90, 2-stroke	185, 2-stroke
Fuel Capacity l	1.0	1.0	1.0	1.0	1.2
Fuel Mix %	2	2	2	2	2
Fuel Consumption l/hour	0.9	0.9	0.8	0.8	1.3-1.5
Alkylate Fuel	Yes	Yes	Yes	Yes	No
Vibration Levels 3-Axis (ISO 28927-10 on Dynaload) m/s ²	7.0	7.0	6.9	6.9	5.8 breaking; 9.3 drilling*
Sound Power Level (2000/14) dB(A)	109	109	109	109	108
Part Number (ISO Standard Shank)					
Chuck Size Hex 22 x 108 mm	–	–	–	–	8318 0900 40
Chuck Size Hex 25 x 108 mm	8318 0900 61	–	8318 0900 63	–	–
Chuck Size Hex 28 x 152 mm	–	8318 0900 27	–	8318 0900 39	–
Chuck Size Hex 28 x 160 mm	–	8318 0900 25	–	8318 0900 35	–
Chuck Size Hex 32 x 152 mm	–	8318 0900 23	–	8318 0900 33	–
Chuck Size Hex 32 x 160 mm	–	8318 0900 21	–	8318 0900 31	–

HYDRAULIC EQUIPMENT

The same positive feeling you get holding sleek, powerful our pneumatic tools comes through in every Chicago Pneumatic hydraulic tool. Portable, versatile and cost efficient, our handheld hydraulics are the essence of ease. The convenient, compact power pack goes everywhere without towing. And the high-performing lightweight tools get the job done without wearing you down.

No electric supply needed. No pneumatic supply needed. No weather concerns. No transportation concerns. It all adds up to maximum jobsite convenience. It all adds up to our handheld hydraulic tools.

POWER PACKS



Applications

- Used for easily providing power to hydraulic tools at any jobsite

Features

- Easy site-to-site transport with no need for towing
- Thermostatically controlled oil cooler for fast warm-up and help preventing the hydraulic oil from overheating
- Variable-flow on/off valve for simple tool changes and slow start-up
- Gauge displays when it's time to change the filter
- Available in gasoline and electrically driven versions
- Several models equipped with Power On Demand, a system that saves fuel by automatically idling the engine when the tool isn't being used and speeding up when the tool is activated



HYDRAULIC POWER PACKS

	PAC P9	PAC P13	PAC P18	PAC P18 Twin
Weight Including Oil kg	79	91	118	123
Length mm	630	745	755	755
Width mm	530	600	700	700
Height mm	640	705	720	720
Oil Flow l/min	20	20–30	20–40	2x20 / 1x40
Maximum Pressure bar	150	150	145	145
Fuel Capacity l	6	6.5	8.5	8.5
Ehtma Class	C	C/D	C/D/E	C/E
Sound Power Level Guaranteed (2000/14/EC) dB(A)	101	101	101	101
Sound Pressure Level (ISO 11203) (Lp, r=1m) dB(A)	88	89	88	89
Power on Demand (POD)	Yes	Yes	No	Yes
Oil Control – Engine Oil	Yes	Yes	Yes	Yes
Electric Start	No	No	Yes	Yes
Engine	9 HP Honda® Petrol	13 HP Honda® Petrol	18 HP B&S Vanguard Petrol	18 HP B&S Vanguard Petrol
Part Number	1807 0080 53	1807 0110 29	1807 0160 28	1807 0160 45

HYDRAULIC POWER PACKS

	PAC E6	PAC E11	PAC E11 Twin
Weight Including Oil kg	99	130	135
Length mm	630	745	745
Width mm	530	605	605
Height mm	640	705	705
Oil Flow l/min	20	30	2x20 / 1x40
Maximum Pressure bar	150	172	155
Fuel Capacity l	–	–	–
Ehtma Class	C	D	C/E
Sound Power Level Guaranteed (2000/14/EC) dB(A)	101	101	101
Sound Pressure Level (ISO 11203) (Lp, r=1m) dB(A)	82	87	86
Power on Demand (POD)	No	No	No
Oil Control – Engine Oil	No	No	No
Electric Start	Yes	Yes	Yes
Engine	5.5 kW / 3x400 V 16A Electric	11 kW / 3x400 V 32A Electric	11 kW / 3x400 V 32A Electric
Part Number	1807 0080 55	1807 0160 47	1807 0160 46

PICK HAMMER



Applications

- Used for light work in renovation, demolition and structural alteration

Features

- Lightweight for horizontal work
- Slim design for excellent line of sight to the working tool point
- Well balanced with no protruding parts that can come into contact with the operator's body
- Fitted with flat face quick-release couplings for fast, easy connections

HYDRAULIC PICK HAMMER

BRK 25 D

Weight Without Hoses kg	12.6
Length mm	650
Oil Flow l/min	20
Working Pressure bar	80-100
Maximum Return Line Pressure bar	10
EHTMA Class	C
Vibration Level 3 Axes (ISO 28927-10) m/s	16.5
Sound Power Level Guaranteed (2000/14/EC) dB(A)	105
Sound Pressure Level (ISO 11203) (Lp, r=1m) dB(A)	92
Impact Rate bpm	2,300
Shank Size Hex mm	22 x 82.5
Part Number	1801 1746 12

BREAKERS



Applications

- Used for heavy work in renovation, demolition, road building, line installation and more

Features

- Range of models from lightweight to super heavy duty
- Multipurpose work in asphalt, brick work, concrete and frozen soil
- Heavy-duty models can be used instead of small excavators with breaker attachments
- Powerful, reliable performance day in and day out
- High-Back pressure version available for skid steer connection

HYDRAULIC BREAKERS

	BRK 40	BRK 40 VR	BRK 55	BRK 55 VR	BRK 55 HBP	BRK 70
Weight With Hoses kg	19.3	25.2	22.3	28.2	22.3	26.7
Length mm	650	650	690	690	690	765
Oil Flow l/min	20	20	20-30	20-30	20-30	20-30
Working Pressure bar	95-110	95-110	105-125	105-125	115-130	110-125
Maximum Return Line Pressure bar	10	10	15	15	35	15
Impact Rate bpm	1,400	1,400	1,500-2,100	1,500-2,100	1,500-2,100	1,350-1,750
Vibration Level 3 Axes (ISO 28927-10) m/s ²	15.1	5	16.6	4.6	17.3 (20 lpm) 17.4 (30 lpm)	19.4
Sound Power Level Guaranteed (2000/14/EC) Lw dB(A)	106	106	107	107	107	107
Sound Pressure Level (2000/14/EC) (Lp, r=1m) dB(A)	93	93	95	95	95	94
EHTMA Class	C	C	C/D	C/D	C/D	C/D
Part Number – Chuck Size Hex 25 x 108 mm	1801 3446 11	1801 3447 19	1801 3546 05	1801 3547 23	1801 3547 42	–
Part Number – Chuck Size Hex 28 x 152 mm	1801 3446 54	–	–	–	1801 3547 43	–
Part Number – Chuck Size Hex 28 x 160 mm	–	–	1801 3546 63	1801 3547 31	–	1801 3646 70
Part Number – Chuck Size Hex 32 x 152 mm	1801 3446 60	1801 3447 21	–	1801 3547 24	1801 3547 44	–
Part Number – Chuck Size Hex 32 x 160 mm	1801 3446 62	1801 3447 22	1801 3546 68	1801 3547 25	–	1801 3646 07

HYDRAULIC BREAKERS

	BRK 70 VR	BRK 70 HBP	BRK 95	BRK 95 VR	BRK 95 HBP
Weight kg	32.6	26.7	33.2	39.1	33.2
Length mm	765	765	765	765	765
Oil Flow l/min	20-30	20-30	30-40	30-40	30
Working Pressure bar	110-125	115-130	110-125	110-125	115-130
Maximum Return Line Pressure bar	15	35	15	15	20
Impact Rate bpm	1,350-1,750	1,350-1,750	1,150-1,600	1,150-1,600	1,150-1,600
Vibration Level 3 Axes (ISO 28927-10) m/s ²	4.6 (20 lpm) 6.0 (30 lpm)	18.6 (20 lpm) 18.1 (30 lpm)	20.1 (30 lpm) 19.7 (40 lpm)	5.4 (30 lpm) 6.3 (40 lpm)	20.1 (30 lpm) 19.7 (40 lpm)
Sound Power Level Guaranteed (2000/14/EC) Lw dB(A)	107	107	106	106	106
Sound Pressure Level (2000/14/EC) (Lp, r=1m) dB(A)	95	95	93	93	93
EHTMA Class	C/D	C/D	D/E	D/E	D
Part Number – Chuck Size Hex 25 x 108 mm	–	1801 3647 45	–	–	–
Part Number – Chuck Size Hex 28 x 152 mm	–	–	–	–	1801 3746 85
Part Number – Chuck Size Hex 32 x 160 mm	1801 3647 28	–	1801 3746 09	1801 3747 30	–
Part Number – Chuck Size Hex 32 x 152 mm	1801 3647 27	1801 3647 37	–	–	1801 3746 76

CUT-OFF SAWS



Applications

- Used to cut through concrete, asphalt and steel

Features

- The power you need to cut through the toughest materials
- Open cutting face eases use even in demanding conditions
- Direct-drive configuration reduces maintenance

HYDRAULIC CUT-OFF SAWS	SAW 14	SAW 16
Weight Without Hoses kg	9.8	10.6
Service Weight Including Hoses and Disc kg	13.3	14.9
Disc Size mm	355	405
Arbor Size mm	25.4	25.4
Cutting Depth mm	133	160
Oil Flow l/min	20–30	20–40
Maximum Pressure bar	172	172
Revolutions rpm	2,500–4,000	2,000–4,000
Speed m/s	46–75	42–85
EHTMA Class	C/D	C/D/E
Vibration Level 3 Axes (ISO 28927-8) m/s ²	4.9	4.9
Sound Power Level Guaranteed (2000/14/EC) Lw dB(A)	99	115
Sound Pressure Level (ISO 11203) (Lp, r=1m) dB(A)	86	102
Part Number	1809 0140 03	1809 0166 13

CORE DRILLS



Applications

- Used for installing pipes, drainage, cable or ventilation ducts

Features

- Well suited for drilling in concrete, masonry and asphalt
- Can be operated freehand or mounted in a drill stand
- Hydraulic control of the drill torque helps reduce kickback when bits jam
- Compact design for easy freehand drilling of holes up to 8 inches

HYDRAULIC CORE DRILLS	COR 5	COR 15
Weight With Hoses kg	9.45	9.25
Length Without Drill mm	414	406
Drill Diameter mm	50–202	12–75
Oil Flow l/min	20–30	20–30
Working Pressure bar	60–120	60–120
Revolutions rpm	600–900	1,500–2,250
Thread Female (Drive) ¹	1/2" BSP	1/2" BSP
EHTMA Class	C/D	C/D
Vibration Level 3 Axes (ISO 28927-5) m/s ²	3.1	2.7
Sound Pressure Level (ISO 11203) (Lp, r=1m) dB(A)	<70	<70
Part Number	1806 1014 54	1806 1014 55

¹1/2" BSP male x 1/4" UNC male drive adaptor included for use of larger diameter core bits

ROCK DRILLS



Applications

- Used in construction, utility, quarry and other applications requiring heavy-duty drilling for blast and anchor holes

Features

- Efficient drilling without a large compressor
- Streamlined design works well in tight spaces
- Durable construction for long-term reliability

HYDRAULIC ROCK DRILLS	RD 48 M	RDR 48 R
Weight Without Hoses and Drill kg	24.5	22.5
Length mm	610	535
Oil Flow l/min	20–25	20–25
Working Pressure bar	100–140	100–140
Maximum Return Pressure bar	15	15
Impact Rate bpm	2,550	2,550
Revolutions rpm	320–400	320–400
Torque at 100–140 bar	30	90
Vibration Level 3 Axes (ISO 28927–10) m/s ²	11.7	–
Sound Power Level (2000/14/EC) Lw dB(A)	115	115
Sound Pressure Level (ISO 11203) (Lp, r=1m) dB(A)	104	104
EHTMA Class	C	C
Chuck Size Hex mm	22 x 108	22 x 108
Part Number	1801 3800 05	1801 0360 01

POST PULLER



Applications

- Used to remove steel or wood fence posts, crash barriers, concrete foundations and more

Features

- Six tons of raw pulling power handles even the toughest jobs
- Automatic chain-tightening clamp
- Accepts a wide range of shapes
- Can be powered by a power pack or connected to an outlet on a truck, excavator or loader

HYDRAULIC POST PULLER	PPU 22 HD
Weight With Hoses and Chain kg	59.4
Oil Flow l/min	20–40
Working Pressure bar	100–160
Maximum Return Pressure bar	30
Lift Capacity Per Stroke mm	12–200
Pulling Force kg	6,000
Full Pulling Force kg	10,000
EHTMA Class	C/D/E
Part Number	1801 8100 04

POST DRIVERS



Applications

- Used to drive down posts or rods for fences, road signs, crash barriers, tent anchors and more

Features

- Excellent driving power for any condition, including soft soil and rock-hard asphalt
- Rugged for demanding duty, yet easy to operate and maneuver
- Trigger (T) model mounts on driver for short post driving
- Remote Valve (RV) model for remote operation on long poles

HYDRAULIC POST DRIVERS	PDR 30 T	PDR 75 T	PDR 75 RV	PDR 95 T	PDR 95 RV
Weight With Hoses kg	17.6	32.2	32.8	39.2	39.8
Oil Flow l/min	20	20-30	20-30	28-40	28-40
Working Pressure bar	80-100	105-140	105-140	105-125	105-125
Maximum Back Pressure bar	10	25	25	15	15
Impact Rate at 30 l/min	2,300 ¹	1,680	1,680	1,320	1,320
Rec. Driving Diameter ² mm	10-60	40-100	40-100	70-150	70-150
Vibration Level 3 Axes (ISO 28927-10) m/s ²	17.5	12.8	-	20.1	-
Sound Power Level (2000/14/EC) Lw dB(A)	116	115	115	118	118
Sound Pressure Level (ISO 11203) (Lp, r=1m) dB(A)	102	102	102	105	105
EHTMA Class	C	C/D	C/D	D/E	D/E
Activation Type	Trigger Lever	Trigger Lever	Remote Valve	Trigger Lever	Remote Valve
Hydraulic System	Open Center	Open Center	Open or Closed Center	Open Center	Open or Closed Center
Part Number	1801 3940 07	1801 4040 01	1801 4050 01	1801 4140 01	1801 4150 01

¹measured at oil flow 20 l/min

²Driving capacity depending on ground condition and length, material and depth of rod to be driven.

POST HOLE BORER



Applications

- Used to make holes for fence posts and for planting trees

Features

- Makes light work of difficult tasks
- Powerful for drilling even in hard soil
- Clock wise and counter-clock wise rotation
- Can be powered by a power pack or connected to an outlet on a truck, excavator or loader

HYDRAULIC POST HOLE BORER	PHB 3-14
Weight kg	19.8
Length mm	1,085
Oil Flow l/min	15-40
Working Pressure bar	80-140
Maximum Return Pressure bar	50
Revolutions (rpm)	90-240
Auger Size at L=870 mm	90-350
Torque (at 140 bar) Nm	315
Vibration Level 3 Axes (ISO 28927-5) m/s ²	7.4
Sound Pressure Level (ISO 11203) (Lp, r=1m) dB(A)	<70
EHTMA Class	C/D/E
Part Number	1806 1014 43

SUBMERSIBLE WATER PUMPS



Applications

- Used for pumping water from building sites, from flooded excavations and cellars, and in similar situations

Features

- Built for tough conditions:
- The 2" pump (WAP 2) can handle small stones and debris up to 10 mm
- The 3" pump (WAP 3) can handle rocks up to 60 mm in diameter
- Impressive performance in relation to size and weight
- Rugged construction for continuous operation

HYDRAULIC SUBMERSIBLE WATER PUMPS	WAP 2	WAP 3
Weight kg	10.8	13
Height mm	345	450
Width mm	225	300
Oil Flow l/min	18-24	26-38
Working Pressure bar	100	140
Pump Head Max m	25	32
Pump Flow Max l/min	840	1,920
Discharge	2"	3"
EHTMA Class	C	D
Solids Handling Up To mm	10	60
Part Number	1806 1014 41	1806 1014 42

HANDHELD PNEUMATICS

When you get a Chicago Pneumatic tool in your hands, everything just feels right. It's balanced for improved control. The grips fit your hands. It's solid and rugged, yet lightweight for jobsite maneuverability.

Turn the tool on and it feels like an extension of your arms, letting you focus on the job and not the tool. The power flows. The toughness is clear. It's performance in the palm of your hand. It's our handheld pneumatic tool.

BREAKERS



Applications

- Used in demolition, construction, renovation, road construction, bridge work and street repairs

Features

- Robust and proven design
- Built-in vibration reduction (SVR model)
- Alloy steel forgings for excellent durability
- Easy and comfortable to operate
- Easy access to daily service points
- Easy to transport
- All models equipped with mufflers for noise reduction

PNEUMATIC BREAKERS	CP 0112 S	CP 1210 S	CP 1210 S	CP 1210 SVR	CP 1210 SVR	CP 1260 S	CP 1260 SVR	CP 0117 S	CP 1290 S	CP 1290 SVR
Weight kg	14.5	22	22.5	24.5	25	31	34	36	39	43.5
Length mm	535	540	585	600	650	680	735	740	730	785
Air Consumption l/s	23	26.5	26.5	26.5	26.5	34.5	34.5	35	43	43
Blows Per Minute bpm	1,620	1,400	1,400	1,400	1,400	1,300	1,300	1,080	1,100	1,100
Vibration Level 3 Axes (ISO 20643) m/s ²	16.3	14.6	14.6	5.3	5.3	20.7	6.5	11.9	18.4	6.2
Sound Power Level Guaranteed (I2000/14/EC) dB(A)	105	105	105	105	105	110	110	108	111	111
Sound Pressure Level (ISO 11203) dB(A)	93	92	92	92	92	97	97	95	98	98
Retainer Type	Latch	Latch	Latch	Latch	Latch	Latch	Latch	Latch	Latch	Latch
Air Inlet	3/4" NPTF	3/4" NPTF	3/4" NPTF	3/4" NPTF	3/4" NPTF	3/4" NPTF	3/4" NPTF	3/4" NPTF	3/4" NPTF	3/4" NPTF
Part Number (ISO Std Shank) Chuck: 25 x 108 mm	8900 0030 25	8900 0030 04	–	8900 0030 06	–	–	–	–	–	–
Part Number Chuck: 28 x 160 mm	–	–	8900 0030 07	–	8900 0030 08	8900 0030 31	8900 0030 33	T022093	8900 0030 40	8900 0030 42
Part Number Chuck: 32 x 160 mm	–	–	8900 0030 09	–	8900 0030 10	8900 0030 30	8900 0030 32	T022092	8900 0030 39	8900 0030 41

SPIKE DRIVERS



Applications

- Used for driving spikes in railroad, construction and plant maintenance applications

Features

- Robust, powerful design
- Heavy-duty front head springs for reduced reaction back to operator
- Alloy steel forgings for excellent durability
- Built-in lubricator
- Easy access to daily service points
- Lightweight and easy to transport
- All models equipped with mufflers for noise reduction

PNEUMATIC SPIKE DRIVERS	CP 1260 S SPDR	CP 1290 S SPDR
Weight kg	29.5	38
Length mm	625	660
Air Consumption l/s	34.5	43
Blows Per Minute bpm	1,300	1,110
Vibration Level 3 Axes (ISO 20643) m/s ²	20.7	18.4
Sound Power Level Guaranteed (2000/14/EC) dB(A)	110	111
Sound Pressure Level (ISO 11203) dB(A)	97	98
Air Inlet	3/4" NPTF	3/4" NPTF
Max Head Diameter mm	44	44
Part Number	8900 0030 34	8900 0030 43



PICK HAMMERS



Applications

- Used for light to medium demolition, trenching and renovation applications

Features

- Ideal combination of power and lightweight design
- Multipurpose versatility
- Quality components for excellent durability
- Some models available with latch retainer for quick and easy change of steels
- Models with a vibration reduced D-handle available (SVR)

PNEUMATIC PICK HAMMERS	CP 0122 S	CP 0122 SL	CP 0122 SVR	CP 0125 S	CP 0125 SVR	CP 0222 CHITBS	CP 0222 CHOTBS
Weight kg	11	13	13.5	12.5	15	10.5	10.5
Length mm	565	560	665	630	730	495	495
Air Consumption l/s	21	21	21	17	17	19	19
Blows Per Minute bpm	1,380	1,380	1,380	1,080	1,080	1,500	1,500
Vibration Level 3 Axes (ISO 20643) m/s ²	16.3	16.3	21.9	28.7	30.1	19.8	19.8
Sound Power Level Guaranteed (2000/14/EC) dB(A)	105	105	105	105	105	105	105
Sound Pressure Level (ISO 11203) dB(A)	89	93	89	91	91	90	90
Retainer Type	Screw Cap	Latch	Screw Cap	Screw Cap	Screw Cap	Latch	Latch
Air Inlet	3/4" BSP	3/4" BSP	3/4" BSP	3/4" BSP	3/4" BSP	3/4" BSP	3/4" BSP
D-Handle Type	Inside Trigger	Inside Trigger	Inside Trigger	Inside Trigger	Inside Trigger	Inside Trigger	Outside Trigger
Part Number Chuck Size Hex 22 x 82.5 mm	8900 0001 43	8900 0001 48	8900 0001 44	-	-	8900 0001 22	8900 0001 23
Part Number Chuck Size Round 25 x 75 mm	-	-	8900 0001 45	8900 0001 46	8900 0001 47	-	-

CLAY DIGGERS



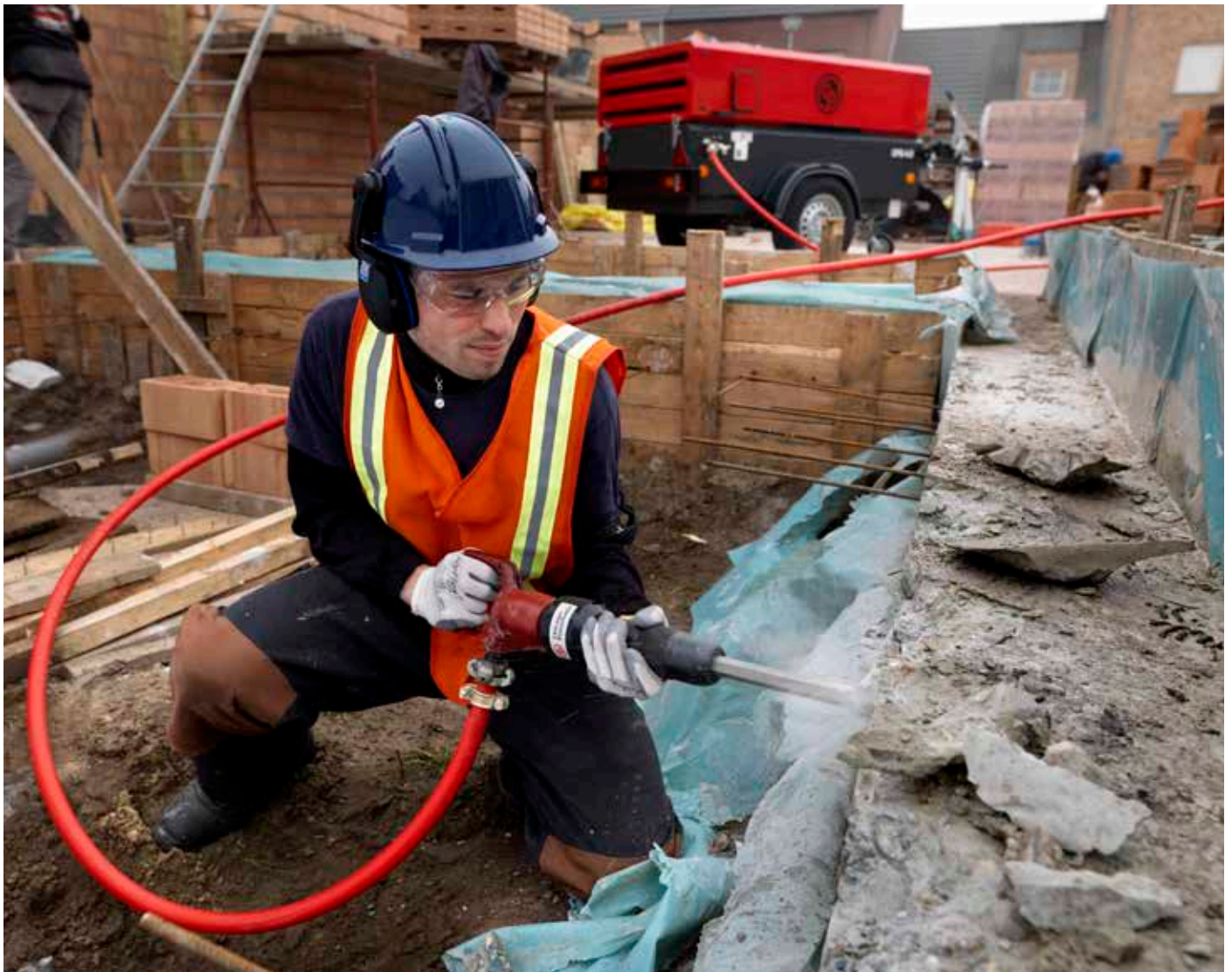
Applications

- Used for light to medium clay digging applications

Features

- Excellent power-to-weight ratio
- Steel design with quality components for long-lasting reliability
- Screw-on retainer
- Models with a vibration-reduced D-handle available (VR,SVR)
- S and SVR models have mufflers

PNEUMATIC CLAY DIGGERS	FL 0022	FL 0022 S	FL 0022 SVR
Weight kg	10.5	11	13
Length mm	495	495	635
Air Consumption l/s	21	21	21
Blows Per Minute bpm	1,320	1,320	1,320
Vibration Level 3 Axes (ISO 20643) m/s ²	16.3	16.3	21.9
Sound Power Level Guaranteed (2000/14/EC) dB(A)	–	105	105
Sound Pressure Level (ISO 11203) dB(A)	–	89	89
Retainer Type	Screw Cap	Screw Cap	Screw Cap
Air Inlet	3/4" BSP	3/4" BSP	3/4" BSP
D-Handle Type	Outside Trigger	Outside Trigger	Outside Trigger
Part Number Chuck Size Square 19 x 82 mm	8900 0001 24	8900 0001 25	8900 0001 39



CHIPPING HAMMERS



Applications

- Used for construction and industrial applications including chipping and scaling

Features

- Complete line of hammers
- Strong and reliable
- All models equipped with mufflers for noise reduction
- Vibration-reduced, silenced (SVR) models available

PNEUMATIC CHIPPING HAMMERS	CP 0012	CP 0016	CP 0017 SVR
Weight kg	5.5	8.5	9.5
Length mm	406	420	540
Air Consumption l/s	9.5	12	17
Blows Per Minute bpm	2,580	1,920	1,770
Vibration Level 3 Axes (ISO 20643) m/s ²	14.6	9.6	12.4
Sound Power Level Guaranteed (2000/14/EC) dB(A)	104	104	104
Sound Pressure Level (ISO 11203) dB(A)	89	91	90
Retainer Type	Screw Cap	Screw Cap	Screw Cap
Air Inlet	3/8" BSP	3/8" BSP	3/8" BSP
D-Handle Type	Inside Trigger	Outside Trigger	Inside Trigger
Chuck Size mm	Hex 19x50	Hex 19x50	Hex 19x50
Part Number	8900 0001 01	8900 0001 32	8900 0001 35

RIVET BUSTERS



Applications

- Used for removing rivets in metal and concrete applications, including demolition and bridge work

Features

- Among the best power-to-weight ratios available
- Teasing throttle for precise control
- Rugged design and components for reliable operation under tough conditions
- Stepped cylinder design for added safety

PNEUMATIC RIVET BUSTERS	CP 4608 P	CP 4608 D	CP 4611 P	CP 4611 D
Weight kg	13.5	14	15	15.5
Length mm	584	600	660	676
Air Consumption l/s	21	21	21	21
Blows Per Minute bpm	900	900	720	720
Vibration Level 3 Axes (ISO 20643) m/s ²	12.6	12.3	13.3	14.3
Sound Power Level Guaranteed (2000/14/EC) dB(A)	105	105	105	105
Sound Pressure Level (ISO 11203) dB(A)	93	93	93	93
Trigger Type	Outside	Inside	Outside	Inside
Air Inlet	1/2" NPTF	1/2" NPTF	1/2" NPTF	1/2" NPTF
Handle Type	Open	D	Open	D
Cylinder	Short (8")	Short (8")	Long (11")	Long (11")
Chuck Size	Jumbo	Jumbo	Jumbo	Jumbo
Part Number	8900 0001 49	8900 0001 51	8900 0001 50	8900 0001 52

ROTARY HAMMERS



Applications

- Used for construction, maintenance and other applications such as drilling, chipping, scarifying and scaling

Features

- Versatile tool is both a drill and a chipping hammer
- Outstanding power-to-weight ratio helps drill holes faster and easier than comparable electric rotary hammers
- Built-in oiler for continuous lubrication
- Teasing throttle for precise control
- Cushioned piston for smooth operation and long service life
- Muffler included

PNEUMATIC ROTARY HAMMERS	CP 0009 CS	CP 0009 ES
Weight kg	4.5	4.5
Length mm	380	380
Air Consumption l/s	9	9
Blows Per Minute bpm	3,420	3,420
Vibration Level 3 Axes (ISO 20643) m/s ² Breaking/Drilling	20.2 / 21.2	20.2 / 21.2
Sound Power Level Guaranteed (2000/14/EC) dB(A)	103	103
Sound Pressure Level (ISO 11203) dB(A)	88	88
Retainer Type	Quick Change	Quick Change
Air Inlet	3/8" BSP	3/8" BSP
Handle Type	D	D
Drill Rate in Hard Rock / Concrete mm	180 / 160	180 / 160
Max Drill Diameter in Hard Rock / Concrete mm	32	32
Chuck Size mm	Rnd. 19x95	Rd 19x14,7 Hex x 89
Part Number	T022322	T022330

CORE DRILL



Applications

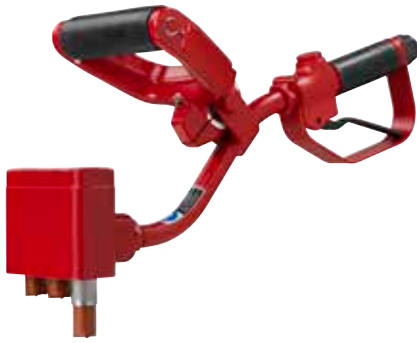
- Used for cutting holes in concrete, brick work, stone and in applications where access or position restricts the use of rig-mounted units

Features

- Core diameter range: 50 to 150 mm (2 1/2" to 6")
- Powerful 1.2 hp air motor
- Self-closing twist throttle operation with one-hand control
- Governor-controlled motor holds speed at heavy loads while increasing power
- Integral oil reservoir ensures correct oiling during use
- External grease fitting for easy lubrication
- Breast-plate for operator comfort during horizontal drilling
- Lightweight for stable operation

PNEUMATIC CORE DRILL	CP 0315
Weight kg	6
Length mm	530
Power kW (hp)	0.9 (1.2)
Air Consumption l/s	20
Free Speed rpm	750
Vibration Level 3 Axes (ISO 20643) m/s ²	7.4
Drilling Diameter mm	50-150
Sound Pressure Level (ISO 11203) dB(A)	77
Air Inlet	1/2" BSP
Part Number	T024733

SCABLERS



Applications

- Used for cleaning and roughing concrete and construction joints

Features

- Lightweight and compact
- Contoured grip handle reduces operator fatigue and increases output
- Tungsten carbide-tipped pistons last longer and are easily replaced
- Chamfered cylinder block increases visibility of the work piece permitting close operation in tight corners
- Vibration-reduced, silenced model (SVR) available

PNEUMATIC SCABLERS	CP 0006	CP 0006 SVR	CP 0066
Weight kg	5.5	6.5	4.5
Length mm	470	470	280
Air Consumption l/s	13	13	11.5
Blows Per Minute bpm	3,000	3,000	3,000
Vibration Level 3 Axes (ISO 20643) m/s ²	23.1	7.1	12.8
Sound Pressure Level (ISO 11203) dB(A)	95	95	97
Air Inlet	1/2" NPTF	1/2" NPTF (1/2" BSP)	1/2" BSP
Number of Pistons	3	3	3
Part Number	T022137	8900 0040 01	T024412

SINKERS/SURFACE ROCK DRILLS



Applications

- Used for quarry, mine, doweling and other drilling/excavating applications

Features

- Valve and cylinder porting concept helps maintain constant drilling speed
- Forged steel housings withstands rugged use
- Cushioned piston reduces shock
- Multi-position throttle for easy starting of holes
- Blower lever for deep hole cleaning on most models
- Double-grip handles
- Built-in oiler for continuous lubrication
- Optional muffler

PNEUMATIC SINKERS/ SURFACE ROCK DRILLS	CP 0022	CP 0022	CP 0032	CP 0032	CP 0032 S	CP 0069	CP 0069 Wet
Weight kg	15	15	24.5	25.5	28	27.5	29
Length mm	475	500	559	575	575	610	622
Air Consumption l/s	22	22	48	48	48	61	61
Blows Per Minute bpm	2,220	2,220	1,980	1,980	1,980	1,860	1,860
Vibration Level 3 Axes (ISO 20643) m/s ²	25.7	25.7	21.9	21.9	21.9	29	29
Sound Power Level Guaranteed (2000/14/EC) dB(A)	116	116	122	122	114	124	124
Sound Pressure Level (ISO 11203) dB(A)	106	106	111	111	103	113	113
Drill Rate in Hard Rock mm/min	150	150	230	230	230	260	260
Air Inlet	1/2" Swivel	1/2" Swivel	3/4" Swivel	3/4" Swivel	3/4" Swivel	3/4" Swivel	3/4" Swivel
Part Number Chuck Size Hex 22 x 82.5 mm	8900 0020 01	–	T022318	–	–	–	–
Part Number Chuck Size Hex 22 x 108 mm	–	8900 0020 02	–	T022117	T025431	T006661	T025423
Part Number Chuck Size Hex 25 x 108 mm	–	–	–	T022319	–	T022259	–

TAMPERS



Applications

- Used in construction, landscaping, renovation and other applications to compact soil around foundations and structures and to compact backfill in trenches

Features

- Maximum power to quickly compact all types of soils, including clay
- Built-in compaction of soils with high percentages of finely crushed or powdered materials
- Heat-treated cylinder and chrome-plated piston for excellent durability
- Adjustable packing maintains a positive air seal
- Integral oiler for continuous lubrication
- Well balanced for easy operation

PNEUMATIC TAMPERS	CP 0003	CP 0004
Weight kg	13.5	19
Length mm	1,320	1,270
Butt Size mm	127	158.8
Body Diameter mm	22.2	25.4
Blows Per Minute bpm	800	780
Sound Power Level Guaranteed (2000/14/EC) dB(A)	108	109
Sound Pressure Level (ISO 11203) dB(A)	95	94
Air Consumption l/s	8.4	13
Air Inlet	1/2" NPTF	1/2" NPTF
Valve Type	Simplex	Ring
Vibration Level 3 Axes (ISO 20643) m/s ²	32.3	44.8
Part Number	T019307	T022292

SUMP PUMPS AND SLUDGE PUMP



Applications

- Sump pumps are used for removing water from trenches, ditches, manholes or industrial sumps and excavations

Features

- Single-stage centrifugal units driven by powerful vane motors
- Double seals protect bearings and motor from water and mud
- Integral oiler provides continuous lubrication
- Integral strainer, air inlet valve
- Bronze impeller
- Cast-iron housing
- No damage running without load

PNEUMATIC SUMP PUMPS	CP 0010	CP 0020
Weight kg	19.5	30.5
Overall Height mm	425	510
Air Consumption l/s	47	51
Air Inlet	3/4" NPT	3/4" NPT
Motor kW (hp)	2.2 (3)	2.9 (4)
Minimum Water Depth mm	22	22
Discharge Outlet	2" NPT	2 1/2" BSP
Minimum Opening mm	210 x 230	230 x 240
Maximum Head m	30.5	27.4
Recommended Air Supply Hose Size mm	19	25.4
Part Number	T022224	T022185



Applications

- Sludge pump is suitable for pumping water, sea water and certain corrosive chemicals in tunneling, mining, shipping and chemical industries

Features

- Easily handles fluids containing 15% solids and particles up to 1"
- Has no motor or diaphragm to wear out because it operates on venturi/ejector principle
- Exhaust muffler reduces noise level

PNEUMATIC SLUDGE PUMP	CP 0077
Weight kg	69
Height mm	600
Minimum Opening mm	584 x 268
Maximum Suction Lift m	6.1
Maximum Head m	53
Discharge Outlet	2 1/2" NPT
Air Inlet	3/4" NPT
Recommended Air Supply Hose mm	25.4
Part Number	T024005

CONCRETE EQUIPMENT

From walls to floor slabs, our concrete line has a solution for every step of the job. And every product offers the reliable performance, user-friendly operation and low maintenance that add up to long-term productivity.

ELECTRONIC POKERS



Applications

- They are suited for a wide range of applications, including columns, beams, walls, floors, bridges, tunnels, foundations, retaining walls, parking, harbors, precast forms and pre-slab forms.

Features

- Plug it directly into a standard 115V or 230V wall socket thanks to the integrated converter and motor-in-head vibrator
- 3-functions push button: start, stop & reset. All protections built-in into electronic housing
- Comes in 2 versions:
 - standard 5m hose for walls and beams etc...
 - de-vibrated E-version for truly low H/A Vibrations for flooring

ELECTRONIC POKERS	VEKTOR 12K40	VEKTOR 12K48	VEKTOR 12K56	VEKTOR 12K65	VEKTOR 12K-E28	VEKTOR 12K-E40	VEKTOR 12K-E48	VEKTOR 12K-E56
Tube Diameter mm	40	48	56	65	28*	40	48	56
Hose Length m	5	5	5	5	0.5	0.5	0.5	0.5
Cable Length m	15	15	15	15	15 + 15	15 + 15	15 + 15	15 + 15
Converter dimensions L x W x H mm	300 x 100 x 80				300 x 100 x 80			
H/A Vibrations m/s ²	3.81	2.47	5.87	4.62	0.6	0.6	0.55	0.53
Radius of Action	12 x Ø	12 x Ø	12 x Ø	12 x Ø	12 x Ø	12 x Ø	12 x Ø	12 x Ø
Consumption, (A) 230V/115V	2.5/5	4.5/9	6.4/12.8	10	1.3	2.5/5	4.5/9	6.4/12.8
Part Number: 230V-1-50/60Hz	4812 0521 27	4812 0521 28	4812 0521 29	4812 0521 30	4812 0521 37	4812 0521 38	4812 0521 39	4812 0521 40
Part Number 115V-1-50/60Hz UK	4812 0521 31	4812 0521 32	4812 0521 33	-	-	4812 0521 41	4812 0521 42	4812 0521 43

MECHANICAL POKERS



Applications

- Concrete vibration
- Floors, slabs, columns, pillars

Features

- Long reach
- Low H/A Vibrations
- Low Maintenance

MECHANICAL POKERS	VPM 26	VPM 36	VPM 46	VPM 56
Tube Diameter mm	25	35	45	55
Tube Length mm	295	330	375	390
Tube Weight kg	0.5	1.8	1.9	2.0
Frequency vpm	12,000	12,000	12,000	11,300
H/A Vibrations m/s ²	2.0	5.2	6.9	8.2
Sound Power dB(A)	77.5	82	87.4	90
Part Number	4812 0505 62	4812 0505 63	4812 0505 64	4812 0505 65

DRIVE UNITS



Applications

- Concrete vibration
- To run VPM pokers

Features

- Reliable Honda® gasoline or Lombardini® diesel engines
- Engine mounted on rubber element reduces noise and vibration
- Solid frame protection with plate to shield engine

DRIVE UNITS	VDD 3000	VDG3200
Engine	Lombardini® 15 Ld 225	Honda® GX 160
Type	diesel	Gasoline
Power kW (hp)	3.0 (4.1)	3.2 (4.2)
Speed rpm	2,900	2,900
Weight kg	46	15
Sound Power dB(A)	79	75.7
Part Number	4812 0515 70	4812 0515 69

HIGH FREQUENCY POKER



Applications

- Concrete vibration (small to medium jobs)

Features

- Ergonomic handle with grip
- 5m of cable
- Easy carbon brush access
- Air filter

DRIVE UNIT	VDE 1600
Power W (hp)	1.6 (2.2)
Cable length m	5
Weight kg	6.1
Speed vpm	12,000
H/A Vibrations m/s ²	2.84
Brush lifetime hr	250
Consumption, (A) 230V/115V	7/14
Part Number: 230V-1-50/60Hz	4812 0520 47
Part Number: 115V-1-50/60Hz US & CAN	4812 0520 48

FLEXIBLE SHAFTS	10	15	20	30	40
Hose length m	1	1.5	2	3	4
Weight kg	2.4	3	3.8	5.6	7.3
Part Number	4812 0508 13	4812 0508 14	4812 0508 15	4812 0508 16	4812 0508 17

VIBRATOR HEADS	AT 29	AT 39	AT 49	AT 59
Tube Diameter mm	29	39	49	59
Length mm	332	315	311	306
Weight kg	1.3	2.1	2.7	3.9
Part Number	4812 0508 05	4812 0508 06	4812 0508 07	4812 0508 08

ELECTRIC POKERS



Applications

- Concrete vibration
- Medium to high slump concrete
- Columns, beams, walls, floors, bridges, tunnels, foundations, retaining walls, parking, harbors, precast forms and pre-slab forms

Features

- Ergonomics aluminum toggle switch box for easy one-hand operation
- Quick-assembly design simplifies bearing replacement
- 10 m of cable and 5 m of hose for extended reach
- Shock and vibration absorption minimize vibration to the hand

ELECTRIC POKERS	VPE 40	VPE 50	VPE 60
Tube Diameter mm	40	50	60
Tube Length mm	255	284	330
Tube Weight kg	1.84	3.28	3.23
Frequency vpm	200–12,000	200–12,000	200–12,000
Ampere at 42V A	4	8	11
H/A Vibrations m/s ²	1.8	3.28	3.23
Sound Power dB(A)	86	87	95
Part Number	4812 0505 56	4812 0505 57	4812 0505 58

GENERATORS



Applications

- Recommended for use with VPE pokers on remote job sites where portable power is needed. These models can power up to four VPE pokers simultaneously.

Features

- Robust frame with strong protection
- Control box is mounted on a rubber element to minimize vibration to the plugs
- High-output permanent magnet generator for lighter weight and high output stability
- Honda® gasoline and Kohler® diesel engines for reliable performance
- Kill ignition switch included on gasoline-powered models for easy shut-off

GENERATORS	VCG 1800	VCD 2400	VCG 4700	VCD 4700
Engine type	Honda GX160, 4-stroke, Manual start	Kohler KD225, 4-stroke, Manual start	Honda GX270, 4-stroke, Manual start	Kohler KD350, 4-stroke, Manual start
Fuel	Gasoline	Diesel	Gasoline	Diesel
Max Power at 3,600rpm kW (hp)	7.1 (9.5)	3.5 (4.8)	6.3 (8.4)	5.5 (7.5)
Standby Power kVA	1.8	2.4	4.7	4.6
Number of Outlets	2	3	4	4
Amperage A	25	33	67	65
Voltage V	42V-3-200Hz	42V-3-200Hz	42V-3-200Hz	42V-3-200Hz
Weight kg	45	68	85	95
Sound Power dB(A)	94	105	97	108
Wheels	Optional	Optional	Yes	Yes
Part Number	4812 0514 54	4812 0514 55	4812 0514 56	4812 0514 57

FREQUENCY CONVERTERS



Applications

- Models are designed to run CP VPE electrical pokers or any pokers working under 42V-3-200Hz.
- Recommended for job sites where electricity is supplied.

Features

- Robust, solid frame with dedicated socket box
- Reliable three-phase or single-phase asynchronous motor for long life
- High-output permanent magnet generator for lighter weight and high output stability
- Available with up to four outlets for job site flexibility

FREQUENCY CONVERTERS	VCE 800M	VCE 1800T	VCE 4700T
Power kVA	0.8	1.8	4.7
Output Density at 42V A	11	25	67
Number of Phases (Primary Voltage)	1	3	3
Number of Outlets	1	2	4
Weight kg	18	31	70
Protection index	IP55	IP55	IP55
Sound Power dB(A)	76	80	85
Part Number	4812 0515 85	4812 0515 87	4812 0515 90

PNEUMATIC POKERS



Applications

- Medium size applications
- Floors, bridges, tunnels, foundations, retaining walls, parking structures, harbors and precast forms

Features

- Available with 2 m or 4 m of hose for wall/column applications
- Reinforced, multi-layer hose design minimizes H/A vibrations
- Built-in silencer for reduced noise
- Air-cooled operation allows use for longer periods

PNEUMATIC POKERS	VPP 27	VPP 37	VPP 47	VPP 57	VPP 67	VPP 77
Tube Diameter mm	27	37	47	57	67	77
Tube Length mm	254	267	316	344	365	398
Tube Weight kg	0.7	1.5	2.8	4.5	7.9	8.9
Frequency vpm	12,000	12,000	12,000	12,000	12,000	12,000
Air Consumption l/s cfm m³/min	6 12.7 0.36	7.7 16.2 0.46	11.7 24.7 0.7	16.7 35.3 1	16.7 35.3 1	21.7 45.9 1.3
H/A Vibrations m/s²	0.5	1.0	2.4	2.1	2.1	2.4
Sound Power dB(A)	84.5	89.2	95.8	95	94	98
Part Number Hose Length – 2 m	4700 1174 40	4700 1174 41	4700 1174 42	4700 1174 43	4700 1174 44	4700 1174 45
Part Number Hose Length – 4 m	4812 0515 79	4812 0515 80	4812 0515 81	4812 0515 82	4812 0515 83	4812 0515 84

WALK-BEHIND SCREEDS



Applications

- Level concrete that has been vibrated with a poker
- Floors, bridges, parking and harbors.

Features

- Throttle control
- Easy to use and maneuver

WALK-BEHIND SCREEDS	LBG 804	LBG 1200
Engine 4 stroke – manual start	Honda® GX25	Honda® GX35
Fuel	Gasoline	Gasoline
Max Power kW	0.8	1.0
Rated Speed rpm	7,000	9,500
Net Weight kg	18	13
Handle Type	Long (up to 4.5 m)	Short
Profile Length m	2	See chart at right¹
H/A Vibrations m/s²	3.5	9
Sound Power dB(A)	80	50
Part Number	4812 0552 28	4812 0550 12

¹Profiles and vibrating unit are ordered separately

SCREED BLADES	Part Number
Screed blade 1.2 m	4812 05 50 13
Screed blade 1.8 m	4812 0550 14
Screed blade 2.4 m	4812 0550 15
Screed blade 3.0 m	4812 0550 16
Screed blade 3.7 m	4812 0550 17
Screed blade 4.5 m	4812 0550 18
Screed blade 4.9 m	4812 0550 19



TRUSS SCREEDS



Applications

- Large area of concrete to finish
 - concrete floors
 - landscaping
 - tunnels
 - roads
 - large depots

Features

- User-friendly design
- High productivity
- Cover wide span
- Easy adjustment

END PIECES	LDE 2200 End Piece (Electric)	LDG 3600 End Piece (Gasoline)	End Extension Piece
Length mm	620	590	500
Width mm	575	575	380
Height mm	1	1	1
Frequency rpm	3	3.6	–
Input kW	3	4 (output)	–
Powered by	400V-3-50 Hz	Honda® GX 160	–
Part Number	4812 0554 37	4812 0554 38	–

ACCESSORIES	Part Number
0,5 m extension	4812 0553 30
Outriggers	4812 0553 24
Outriggers with spacer	4812 0553 28
Double electrical winch kit	4700 8003 83
Skates (one piece)	4700 0220 27
Third man winch	4812 0551 80

LSS SCREED SECTIONS	0.5 m	0.75 m	1 m	2 m	3 m
Length mm	500	750	1,000	2,000	3,000
Width mm	380	380	380	380	380
Height mm	520	520	520	520	520
Weight	19	20	21	39	55
Part Number	4812 0551 74	4812 0551 75	4812 0551 76	4812 0551 77	4812 0551 78

COMBIFORMS



Applications

- This versatile screed rail system is suitable for all beddings. All dimensions of reinforcement bars can be used. Clips, screws and other level adjustment accessories are available separately.

Features

- Lightweight rail system is easy to set in place
- Plastic guide strip allows fast, accurate screeding
- CombiForm stays inside poured concrete and creates an expansion joint

COMBIFORM	C 25	C 45	C 65	C 85	C 105	C 125	C 145
Length m	3.5	3.5	3.5	3.5	3.5	3.5	3.5
Height mm	25	45	65	85	105	125	145
H-1 mm	–	30	28	31	32	32	32
H-2 mm	–	–	67	49	53	64	75
H-3 mm	–	–	–	67	88	109	127
Width mm	80	90	105	115	130	135	160
Weight/m kg	0.72	0.77	1.0	1.13	1.14	1.70	2.20
Weight/3.5 m kg	2.5	2.7	3.5	4.0	4.9	6.0	7.7
Part Number	4812 0552 32	4812 0552 33	4812 0552 34	4812 0552 35	4812 0552 36	4812 0552 37	4812 0552 38
Part Number 1 piece Locking Clip	–	4700 0028 09	4700 0028 10	4700 0028 11	4700 0028 12	4700 0028 13	4700 0028 14

From C 25 to C 125 = 10 pieces of combiform per box
 For C 145 = 8 pieces of combiform per box
 m CombiForm section to support normal beam loads

POWER TROWELS



Applications

They are ideal for concrete slabs, industrial warehouse floors, residential housing, parking lots and alleys — or anywhere concrete slabs are poured. The STG 244 is recommended for smaller slabs and finishing edges, while the STG 375 and 479 can be used for larger slabs.

Features

- QuickStop power trowels operate via a belt clutch that responds instantly to the palm handle kill switch thereby eliminating any possibility of handle rotation and risk of injury to the operator.
- The handle folds to a compact size, making the unit easy to transport and store. All units are equipped with a lifting eye.
- Parts exposed to wet concrete are designed for easy cleaning. Tilt the machine forward during maintenance.

POWER TROWELS	STG 244 F TP	STG 375 F TP	STG 479 F TP
Engine 4 stroke, manual start	Honda GX120	Honda GX160	Honda GX270
Fuel	Gasoline	Gasoline	Gasoline
Power at 3600 rpm kW (hp)	2.6 (3.5)	3.6 (4.8)	6.3 (8.4)
Diameter mm	610	940	1,200
Operating Weight kg	60	87	103
Pitch	Twist pitch	Twist pitch	Twist pitch
Handle	Foldable Adjustable	Foldable Adjustable De-vibrated	Foldable Adjustable De-vibrated
Clutch	Quickstop - Palm Handle	Quickstop - Palm Handle	Quickstop - Palm Handle
Blade speed rpm	40-115	40-115	40-115
Blade pitch	18°	18°	18°
Blade arm	Bolt-on	Bolt-on & Quick release	Bolt-on
H/A Vibrations m/s ²	6.2	3.5	3.5
Sound power level dB(A)	100	106	106
Part Number	4812 0559 24	4812 0559 25	4812 0559 27

SPREADER WAGON



Applications

To spread all types of after-pour powder materials such as:

- Hardeners
- Pigments / colorings
- Reflecting toppings
- Wearing course hardeners

Features

- Flow adjustment
- Flow valve lever
- Bag opening knives
- Dust protection
- Efficient roller drum design
- Large capacity

SPREADER WAGON

SCS 32

Working Width Path mm	830
Weight kg	40
Max. Working Weight kg	100
Material Capacity kg	60
Material Spraying kg/m ²	4
Part Number	4812 0552 41

FLOOR SAWS



Applications

- Cutting expansion joints in asphalt and concrete
- To cut asphalt for road maintenance and as an alternative to jack hammers

Features

- Handle offers three-point adjustment for operator comfort
- Throttle control and kill ignition switch are within easy reach
- Steel blade guard with watering fork cools blade when cutting
- 30 L water tank provides good capacity to save refill time
- Front pointer guides operator for straight cutting

FLOOR SAWS

SCG 350

SCD 450

Standard Disc Size mm	350	450
Maximum Cutting Depth mm	100	150
Engine 4 stroke – manual start	Kohler® CH395	Lombardini® 15 Ld 350
Fuel	Gasoline	diesel
Max. Power kW (hp)	6.7 (9.0)	5.2 (7.0)
Water Tank Capacity l	30	30
Net Weight kg	98	100
Handle Type	Adjustable	Adjustable
H/A Vibrations m/s ²	4.15	12.37
Sound Power dB(A)	115	115
Part Number	4812 0515 92	4812 0515 93





Since 1901 the Chicago Pneumatic name has represented reliability and attention to customer needs, with construction, maintenance and production tools and compressors designed for specific industrial applications. Today, Chicago Pneumatic has a global reach, with local distributors around the world.

Our people start every single day with a passion to research, develop, manufacture and deliver new products that are meant to meet your needs not only today, but tomorrow as well. To learn more, visit www.cp.com.

For more information, please contact your CP partner:

Use only authorized parts. Any damage or malfunction caused by the use of unauthorized parts is not covered by Warranty or Product Liability.